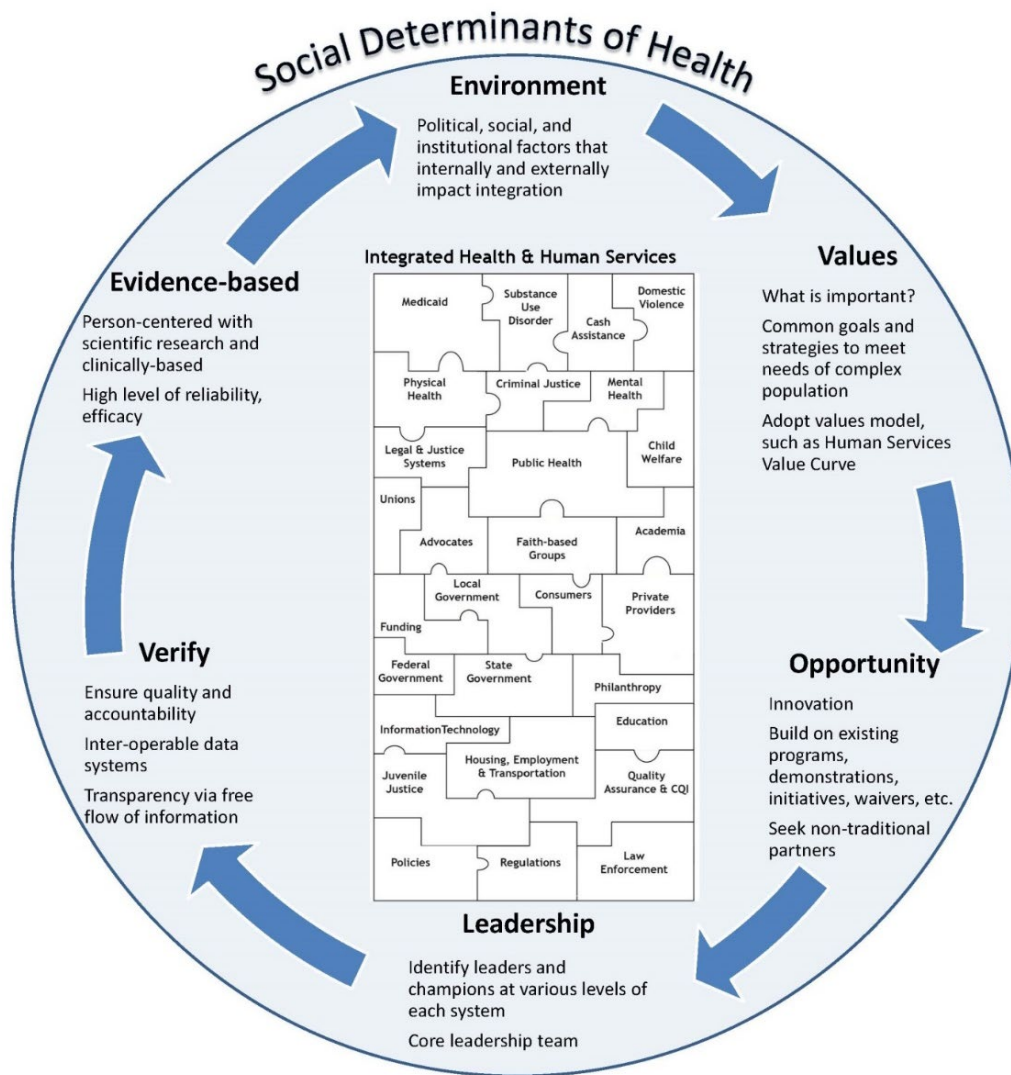


EVOLVE Model of Integration

CHRT developed the EVOLVE Model of Integration—Environment, Values, Opportunity, Leadership, Verify, and Evidence Based or Evidence Informed—to highlight the elements that must be in place to implement and sustain the integration of health and human services. The model is a tool for funders, grantees, and other stakeholders to assess if the process is engaging and employing the necessary elements to advance integration. It prioritizes the social determinants of health as the focus of integration efforts and can be applied to all levels of strategic planning, from design through implementation.



With the exception of first assessing the Environment, the EVOLVE Model is designed in a non-sequential manner so that it can be tailored to the specific needs of any integration process, whether at the community or state level. The EVOLVE Model can serve as a tool to strengthen ongoing efforts at any stage along the integration continuum to move closer to full integration.